

**Eight-Way Power Divider,
2 - 500 MHz**

**DS-309
V3**

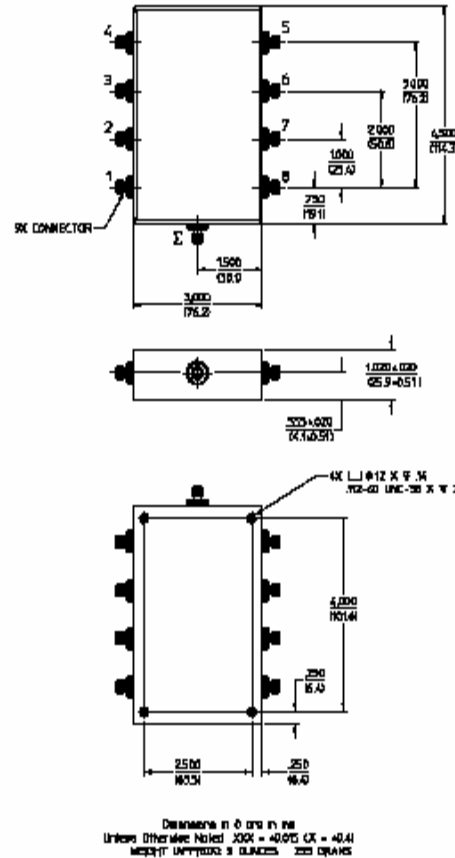
Features

- Low Loss: 1 dB Typical
- High Isolation: 30 dB Typical
- Low VSWR: 1.3:1 Typical
- Impedance: 50 Ohms Nominal
- Maximum Power Rating or Input Power: 2 Watt Max.
- Internal Load Dissipation: 0.25 Watts Max.
- MIL-STD-202 Screening Available

C-18

Description

A Power Divider is ideally a lossless reciprocal device which can also perform vector summation of two or more signals and thus is sometimes called a power combiner or summer.



Electrical Specifications¹: T_A = -55°C to +85°C

Parameter	Test Conditions	Frequency	Units	Min	Typ	Max
Insertion Loss	Less Coupling	2 - 500 MHz	dB	—	—	1.2
Isolation	—	2 - 100 MHz	dB	30	—	—
		100 - 500 MHz	dB	25	—	—
Amplitude Balance	—	2 - 100 MHz	dB	—	—	0.15
		100 - 500 MHz	dB	—	—	0.25
Phase Balance	—	2 - 100 MHz	°	—	—	2.0
		100 - 500 MHz	°	—	—	3.5
VSWR	All Ports	2 - 100 MHz 100 - 500 MHz	Ratio Ratio	— —	— —	1.6:1 1.35:1

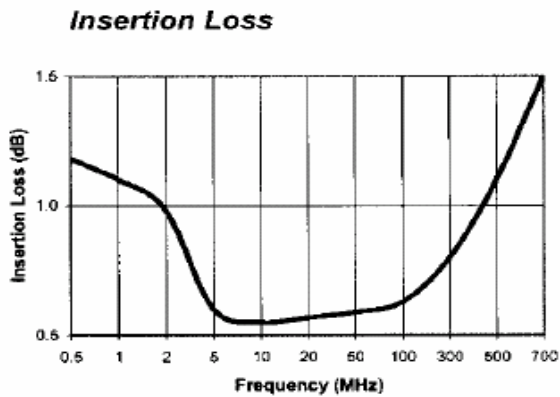
1. All specifications apply with 50 ohm source and load impedance.
This product contains elements protected by United States Patent Number 3,428,920.

**Eight-Way Power Divider,
2 - 500 MHz**

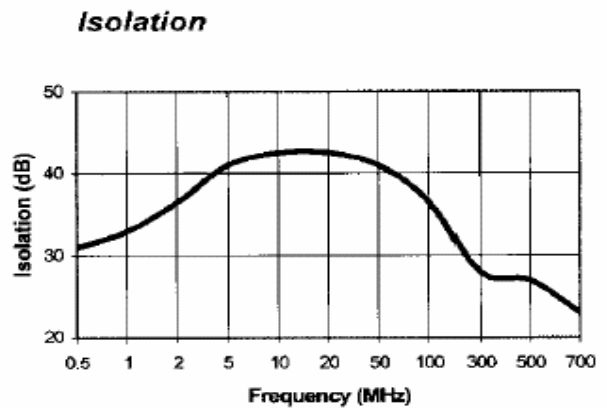
**DS-309
V3**

Typical Performance Curves

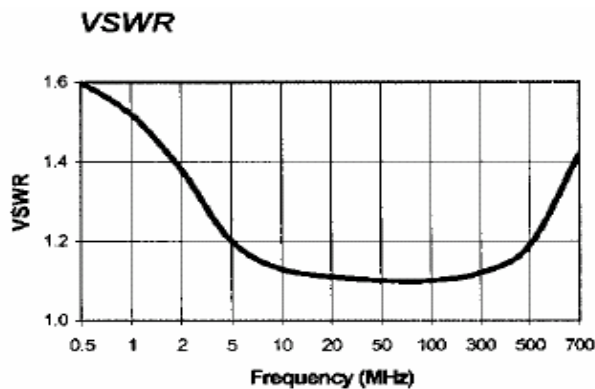
Insertion Loss



Isolation



VSWR



Ordering Information

Part Number	Package
DS-309 BNC	C-18
DS-309 SMA	C-18
DS-309 TNC	C-18
DS-309 N	C-18